

ST. JOHNS COUNTY
COMPREHENSIVE EMERGENCY
MANAGEMENT PLAN

2016

Annex II
Mitigation



I. INTRODUCTION

Hazard mitigation is any action taken to permanently reduce or eliminate long-term risk to people and their property from the effects of hazards. Some examples of hazard mitigation include land use planning techniques that limit infrastructure in high hazard areas and programs for retrofitting existing structures to meet new building codes and standards. Ideally, a community can minimize the effects of future hazards through a mix of code enforcement, planning, and responsible development. Every community is exposed to some level of risk from hazards. Hurricanes, tornadoes, floods, hazardous material spills, fires, severe weather and sinkholes are some of the hazards experienced by Florida communities.

II. GENERAL

Hazards cannot be eliminated, but it is possible to determine the potential hazards, areas most vulnerable and identify local activities that can be taken to reduce the severity of the hazard. St. Johns County has developed a Local Mitigation Strategy with the purpose of developing and executing an ongoing strategy for reducing the community's vulnerability to identified natural, technological and human caused hazards. The strategy provides a rational, managed basis for considering and prioritizing hazard-specific mitigation options and for developing and executing sound, cost-effective mitigation projects. The LMS also provides a basis for justifying the solicitation and use of local, state, federal, and other funding to support hazard mitigation projects and initiatives. St. Johns County's Local Mitigation Strategy is approved by both the State of Florida and FEMA through June 2020.

A. Lead Agency for Pre-Disaster and Post-Disaster Mitigation Operations

St. Johns County Emergency Management is the lead agency for all mitigation activities in the county. The Emergency Management Director or their designee has responsibility for directing all pre- and post-disaster mitigation activities and for coordinating mitigation activities with the St. Johns County Local Mitigation Strategy Taskforce.

B. Support Agencies for Pre-Disaster and Post-Disaster Mitigation Operations

St. Johns County Emergency Management is responsible for coordinating mitigation planning with operational assistance from a number of supporting agencies. Lead and support agencies for mitigation activities are described in **Table 1**.

TABLE 1: Agency Responsibilities for Hazard Mitigation

Agency	Pre-Disaster Mitigation	Post-Disaster Mitigation
American Red Cross (ARC)	S	S
AT&T	S	S
Beaches Energy	S	S
Comcast	S	S
City of St. Augustine	S	S
City of St. Augustine Beach	S	S
Clay County Emergency Management	S	S
Duval County Emergency Management	S	S
Flagler County Emergency Management	S	S
Flagler Estates Water & Road District	S	S
Flagler Hospital	S	S
Florida Division of Emergency Management	S	S
Florida Forest Service	S	S
Florida Power & Light (FPL)	S	S
Jacksonville Electric Authority (JEA)	S	S
Putnam County Emergency Management	S	S
Salvation Army	S	S
St. Johns County Board of County Commissioners	S	S
St. Johns County Building Department	S	S
St. Johns County Clerk of the Court	S	S
St. Johns County Emergency Management	P	P
St. Johns County Engineering Department	S	S
St. Johns County Extension Agent	S	S
St. Johns County Fire / Rescue	S	S
St. Johns County Growth Management	S	S
St. Johns County Health Department	S	S
St. Johns County Planning Department	S	S
St. Johns County Property Appraiser	S	S
St. Johns County Library	S	S
St. Johns County Road & Bridge	S	S
St. Johns County School District	S	S
St. Johns County Sheriff's Office	S	S
St. Johns County Tourist Development Council	S	S
St. Johns County Utilities	S	S
Town of Hastings	S	S

P = Primary Agency | S = Support Agency

C. Concept of Operations

This section of the plan provides an overview of the management of pre- and post-disaster mitigation activities in St. Johns County. The purpose is to provide guidance for the activities necessary for St. Johns County to reduce the potential for damage and loss from future disasters affecting the county.

1. **Emergency Management Organization System Used During Mitigation**

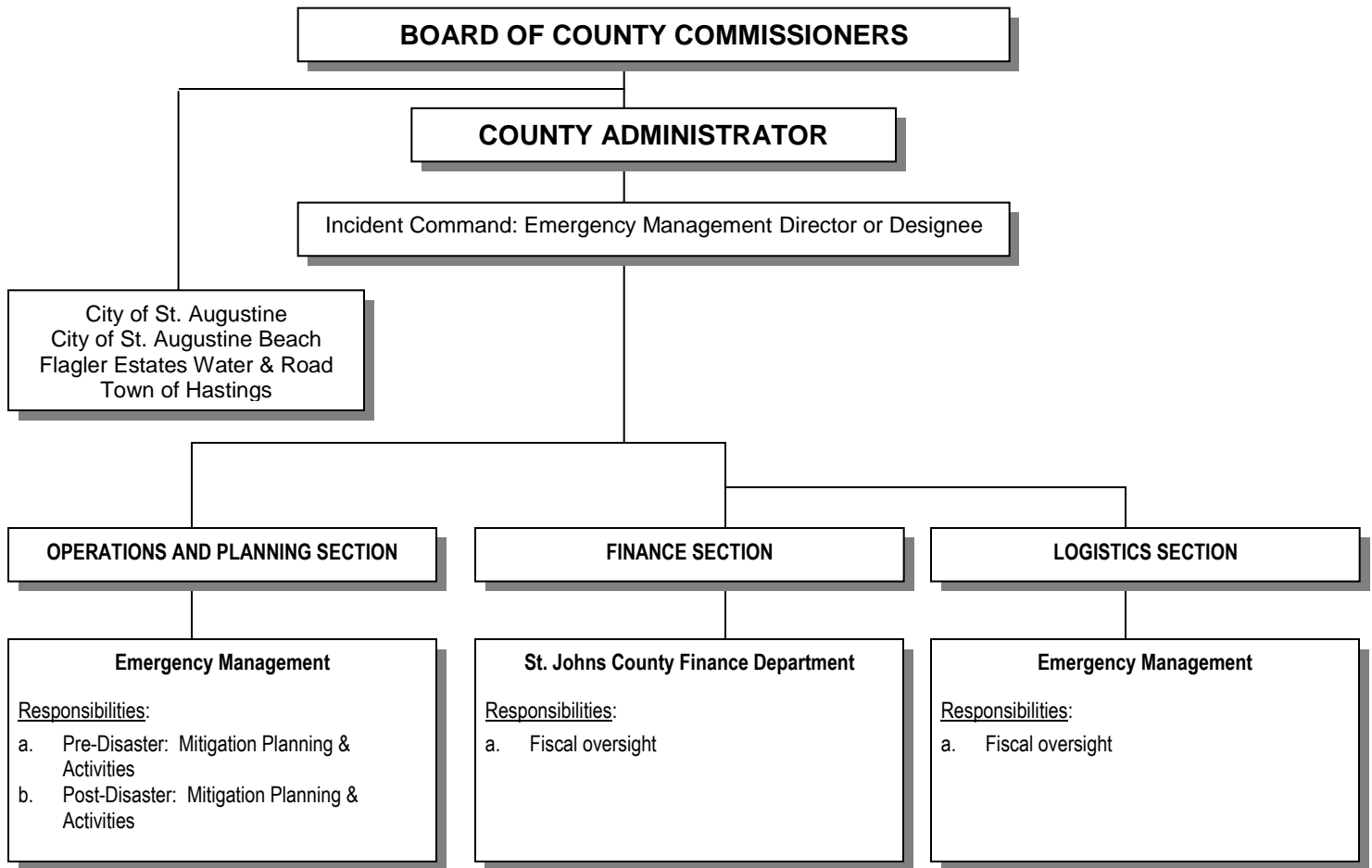
The County operates under the ESF / NIMS system during emergency operations. This system is especially effective for managing response and recovery operations that involve multiple agencies each working on different though, interrelated tasks. The organization system for mitigation activities is streamlined with St. Johns County Emergency Management being the primary coordinating agency of pre- and post-disaster mitigation. Emergency Management receives assistance from supporting agencies, with some mitigation activities carried out directly by those agencies. The organizational chart on the following page shows the relationship between Emergency Management and supporting agencies involved in mitigation operations.

2. **Notification and Coordination of Agency Participation in Mitigation Operations**

a) **Pre-Disaster Operations**

Mitigation activities in the pre-disaster environment are the responsibility of St. Johns County Emergency Management. Emergency Management through the Local Mitigation Strategy (LMS) Taskforce. The St. Johns County LMS identifies the hazards to which St. Johns County is vulnerable; assesses the facilities and structures that are most vulnerable to hazards; offers a prioritized list of mitigation projects to take advantage of available funding; and links mitigation projects to these sources of funding.

Emergency Management is responsible for maintaining the St. Johns County LMS and Project List. The LMS will be updated at least annually, and after each major disaster. Participation by local agencies in the Local Mitigation Strategy Taskforce will be coordinated by Emergency Management and will involve the supporting agencies listed in **Table 1**.



ESF Resource List	
ESF 1	Transportation
ESF 2	Communications
ESF 3	Public Works
ESF 4	Fire Fighting
ESF 5	Information and Planning
ESF 6	Mass Care
ESF 7	Resource Support
ESF 8	Health Care
ESF 9	Search and Rescue
ESF 10	Hazardous Materials/Environmental Protection
ESF 11	Food and Water
ESF 12	Energy
ESF 13	Military Support
ESF 14	Public Information
ESF 15	Volunteers and Donations
ESF 16	Law Enforcement
ESF 17	Animal and Agricultural
ESF 18	Business and Industry

MITIGATION ANNEX – MAJOR EVENTS
LEAD AGENCIES AND RESPONSIBILITIES

b) Post-Disaster Operations

St. Johns County Emergency Management will also be responsible for coordinating local agency participation in post-disaster mitigation activities. Local agencies involved in these operations will vary according to the specifics of each event. Emergency Management will contact all agencies for post-disaster mitigation activities and notify them as to their role in these operations.

3. Coordination of Mitigation Activities with Municipalities and the State

The St. Johns County Emergency Management Director or designee will be responsible for coordinating mitigation activities with the municipalities and the State EOC. The City Manager of St. Augustine, the City Manager of St. Augustine Beach and the Town Clerk of the Town of Hastings, or their designees, will be updated throughout the response, recovery, and mitigation phases of the event. During non-event periods, meetings will be held quarterly or monthly if needed. During events, briefing meetings will be held daily. During the emergency, the Emergency Management Director or their designee will coordinate on an as needed basis with the Bureau of Recovery and Mitigation at the Division of Emergency Management.

4. Local Government Status in the National Flood Insurance Program

St. Johns County participates in the National Flood Insurance Program (NFIP). There are 27,361 policyholders in unincorporated St. Johns County; 4,387 in the City of St. Augustine; 3,278 St. Augustine Beach; and 51 in the Town of Hastings. The county also participates in the Community Rating System with a current CRS rating of 5 and actively supports public education regarding building in flood prone areas.

5. Process for Identifying Mitigation Opportunities in the Post-Disaster Environment

St. Johns County Emergency Management is responsible for coordinating all recovery operations in the county. As a result of this active role in the recovery process, Emergency Management is well poised to identify opportunities for future mitigation projects such as elevation and / or acquisition of floodprone structures,

drainage improvement projects, and infrastructure enhancement projects. Emergency Management works closely with the damage assessment teams in the field and the building inspectors for St. Johns County and the municipalities to identify potential mitigation opportunities.

6. Process to Manage Mitigation Assistance Funds

All mitigation and recovery grants are applied for and administered under the supervision of St. Johns County Emergency Management. Emergency Management has managed a variety of recovery and mitigation grants in the past including Hazard Mitigation Grant Program funds.

III. PRE-DISASTER HAZARD MITIGATION ACTIVITIES

Pre-disaster hazard mitigation activities are described in detail in the St. Johns County Local Mitigation Strategy. The Local Mitigation Strategy is a community-based plan to make the county and local communities safer and more resilient to natural, human caused and technological hazards.¹

IV. POST-DISASTER MITIGATION ACTIVITIES

A. Planning Assumptions

Following a disaster, St. Johns County Emergency Management will rely on information generated by St. Johns County Departments, Municipalities, information collected during damage assessment, the prioritized project list from the St. Johns County LMS, and overall guidance from the Emergency Management Director to identify specific mitigation projects.

B. Lead Agency with Responsibility for Providing Mitigation Assessment

St. Johns County Emergency Management is the primary agency charged with post-disaster mitigation assessment. The Emergency Management Director or their designee has the primary responsibility for assessing mitigation needs in the post-disaster environments. The Local Mitigation Strategy Taskforce members and the agencies listed in Table 1 will be the support agencies.

¹ The St. Johns County Local Mitigation Strategy is a separate reference and planning document that can be found on file at with St. Johns County Emergency Management.

C. Roles and Responsibilities of Lead and Support Agencies

1. St. Johns County Emergency Management

St. Johns County Emergency Management will serve as the coordinating organization for all post-disaster mitigation activities. Emergency Management will notify all supporting agencies required for mitigation assessment operations by telephone, text message or email; coordinate all activities required to identify potential mitigation projects and initiatives, coordinate the application process for mitigation related grants; and serve as the grant administrator for County mitigation grants.

The Emergency Management Director or their designee also serves as the point of contact for providing information to residents of the county describing how they can minimize damage from future disasters. This is accomplished through brochures, mitigation information on the Emergency Management website, community awareness programs, social media and videos on GTV.

2. St. Johns County Property Appraiser

The St. Johns County Property Appraiser will support Emergency Management by providing technical expertise regarding property values, damages and losses to properties as a result of a disaster.

3. St. Johns County Growth Management

St. Johns County Growth Management and the Municipal Building Departments will provide support to Emergency Management in identifying mitigation activities that could reduce the vulnerability of public infrastructure, businesses and housing to damage and loss from natural, human caused and technological disasters.

4. St. Johns County Public Works Department / Municipal Public Works Departments

The St. Johns County Public Works Department and the Municipal Public Works Departments will assist Emergency Management in identifying potential road, bridge, storm water, water and sewer mitigation projects.

D. Coordination between Lead and Support Agencies

Emergency Management will serve as the organization responsible for coordinating mitigation activities for lead and support agencies. In St.

Johns County, much of the work involved in identifying opportunities for possible mitigation activities is accomplished during the pre-disaster mitigation phase (e.g. during the mitigation project identification and ranking process established by the St. Johns County LMS Taskforce). Opportunities for mitigation are also discovered during the initial and preliminary damage assessments and throughout the public assistance processes. The supporting agencies noted above assess damage to public infrastructure, businesses and residences working in conjunction with Emergency Management in the damage assessment process. Emergency Management, along with input from supporting agencies, then considers the information gathered during the recovery phase and determinations are made regarding potential mitigation projects.

E. Identification of Structures in the Special Flood Hazard Area

St. Johns County Emergency Management in conjunction with County and Municipal Floodplain Managers will work with the Damage Assessment Teams to identify structures damaged within the Special Flood Hazard Areas. Building Officials or the Floodplain Manager will then complete a secondary assessment of these structures to determine if they have sustained substantial damage as defined by the National Flood Insurance Program.